



*Sustainable*  
**Roofing & Waterproofing**  
*Alliance*



**Advancing sustainable  
practices through sharing  
and global collaboration**

# The Sustainable Roofing & Waterproofing Alliance

*Advancing sustainable practices through sharing and global collaboration*

---

In nearly every industry there exists an elite group of individuals whose work represents the pinnacle of that industry's progress. Carlisle Construction Materials's Sustainable Roofing & Waterproofing Alliance (SRWA) is a partnership between Carlisle and the most highly esteemed roof consultants. The goal of the program extends far beyond roofing materials and systems, striving instead to provide services and solutions throughout the entire roofing process – from specification and design to installation and maintenance. It represents where the apex of the industry today meets the next great strides toward roofing perfection through constant innovation. The Sustainable Roofing & Waterproofing Alliance partners the unmatched roofing capabilities of Carlisle with consultants who are committed to the highest performance and the most durable roofing systems and assemblies. Members have access to the most sophisticated training and tools to facilitate forensic analysis, installation and design for energy-efficient and sustainable assemblies that show a deep commitment to the environment.

## Carlisle Construction Materials

*A Commitment to Innovation*

---

Carlisle Construction Materials has been offering single-ply roofing solutions for over 55 years. Since producing its first single-ply roofing membrane in 1961, Carlisle has developed a reputation within the roofing industry for quality products, exceptional service and unmatched innovation. The company is staffed with hundreds of the world's most knowledgeable professionals whose unrivaled expertise allows Carlisle to offer a level of service and support that exceeds all others. With billions of square feet of warranted material in service, and a future filled with potential, Carlisle is the top choice for any and every roofing need.

Carlisle offers products nationwide with more than 33 manufacturing facilities that produce roofing membranes, insulation, waterproofing products and air and vapor barriers for the entire building envelope. Carlisle is committed to offering superior products and customer service and stands behind this commitment with a continued focus on quality products and timely deliveries.



## What is Sustainability?

---

A balanced integration of sound design principals and green proven products to achieve durability, longer service life, energy efficiency and a reduced carbon footprint.



# The Partnership

---

SRWA-affiliated consultants bring more than years of experience to the table – their wide area of expertise, keen knowledge of all roofing materials and systems, and their constant adaptation to the newest innovations and materials make them a perfect match for a partnership with Carlisle. Carlisle provides its uniquely qualified SRWA affiliates with the latest tools and continuing education sessions, allowing them to offer exclusive services and added-value support that are unmatched in the industry.

Those services include:

- Installation monitoring for quality assurance
- Industry-leading education
- Existing roof system diagnosis and assessment consisting of:
  - Sophisticated forensic tools and machinery



# Education & Certification

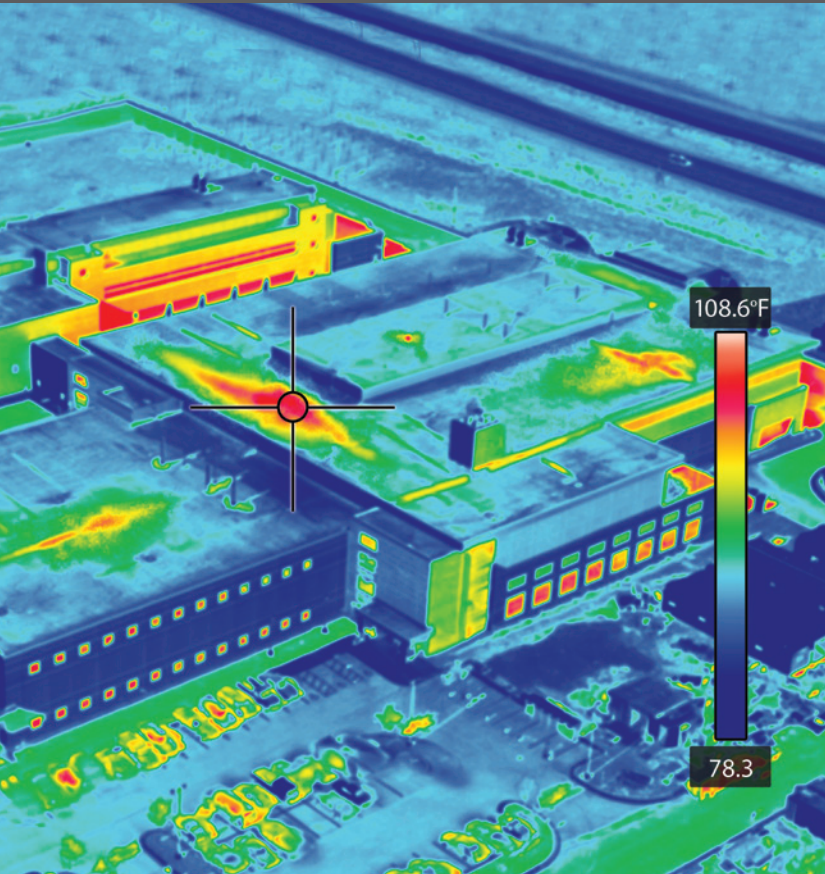
---

SRWA consultants attend education sessions by Carlisle on various aspects of installation in order to further grow their expertise. These conferences and workshops are offered several times a year and focus on all aspects of roofing, from traditional EPDM, TPO, and PVC single-ply systems to diverse building envelope applications, including critical tie-ins where common failures are reported. Various installation techniques are extensively discussed with in-depth, hands-on demonstrations of various roofing and waterproofing applications including above and below-grade waterproofing, plaza waterproofing and exterior wall systems. The SRWA Continuing Education Program also allows top consultants to engage with other industry experts.

# Business-Building Tools

Carlisle offers its SRWA consultants access to the roofing industry's most advanced tools so they can help their customers save money and get the most of their long-term investment.

The ASCE-7 Calculator helps consultants determine the appropriate roof system selection along with required perimeter and corner enhancements to ensure wind zone uplift compliance with the International Building Code.



## Loaner Program

The Carlisle Loaner Program provides SRWA affiliates with free access to performance equipment, cutting-edge tools and high-tech forensic instruments that are essential for conducting a thorough roof investigation and field evaluation. These tools ensure that SRWA affiliates provide their customers with a dependable, fact-based evaluation that will provide a solid foundation for future roofing performance. Available tools include:

- Adhesion test equipment
- Bubble (uplift/adhesion) tester
- Infrared cameras
- Moisture meters
- Reflectometers
- Thermometers
- Psychrometers
- Digital Ultrasonic Thickness Gauge
- Electronic Leak Detection

## Resources

Additional resources that can be found on the SRWA website include:

- Research Studies
- Industry Papers
- Design References
- Specs & Details
- Building Envelopes
- Industry News

For more information, please visit:

[www.srwaglobal.com](http://www.srwaglobal.com)



*Sustainable*  
**Roofing & Waterproofing**  
*Alliance*